



Contact 01283 228766 or visit
www.southderbyshire.gov.uk/parklife

Regular events and activities for all to enjoy on our urban parks in Swadlincote including Eureka Park, Maurice Lea Park, Newhall Park and Swadlincote Woodlands.



Other Environmental Education Project activities

Contact us for information and prices:
Rosliston@southderbyshire.gov.uk

- Drop In Gardening—Mondays 2-4 (not Bank Hols) FREE
- Rosliston Rangers—conservation volunteering (adults) 2nd/4th Tuesdays 10-3 FREE
- School visits at Rosliston, Swadlincote, school grounds and elsewhere
- Rooms to let at Rosliston
- Family Trails at Rosliston DOWNLOAD FREE
- Swadlincote Heritage Trail DOWNLOAD FREE
- 'Forest Bathing' events
- Family workshops
- Children's Parties
- Corporate team building and volunteering



Environmental Education Project
at Rosliston Forestry Centre

For other events at Rosliston Forestry Centre, across the National Forest and beyond go to: www.roslistonforestrycentre.co.uk

www.nationalforest.org

www.southderbyshire.gov.uk

For more information on Wildlife Watch look at:
www.derbyshirewildlifetrust.org.uk or www.wildlifewatch.org.uk

If you require this information in large print or in another language please phone: 01283 595795 or email: customer.services@southderbyshire.gov.uk

Environmental Education Project
working across South Derbyshire
and The National Forest



Environmental
Education
Project

at Rosliston Forestry Centre



wildlife watch

Family Activities & Events 2022



Environmental Education Project
at Rosliston Forestry Centre

Environmental Education Project:
Tel: 01283 535039 Email: rosliston@southderbyshire.gov.uk
Rosliston Forestry Centre, Burton Road, Rosliston, Swadlincote, Derbyshire DE12 8JX
www.roslistonforestrycentre.co.uk

**Welcome to the Environmental
Education Project
Event Programme 2022**

*Unless otherwise stated, events are
suitable for families & children under 12*
Did you know...?
Midland Classic Bus No22 stops here.

Tues 22 February

Willow Weaving

2-3:30pm

Willow is both useful and environmentally beneficial. Come and make a decorative fish or useful plant support while learning how we maintain our willow features. Please note Covid Safe guidelines will be in operation with regards numbers and social distancing.

Booking essential £5.00 per person £3 under 12s

22,24,25 February

Japanese Trail & Origami

10am-12noon & 1pm-3pm

Join us on a guided walk of the Japanese Trail through the beautiful grounds of Rosliston then try your hand at some cultural paper folding make a useful pot or a decorative ornament.

No booking required

FREE OF CHARGE

Funded by a Sasakawa Foundation grant

9-24 April

Easter Animal Egg Trail

Available from reception daily 10am-3pm

It isn't only birds that lay eggs, many creatures use eggs to produce young. Use our trail pack to explore the site this Easter and discover more about some of the many fascinating egg layers that live in the National Forest.

£2 per trail pack

No booking required



Covid measures / updates

Appropriate risk assessments and measures are in place at our events and activities.

Please contact us or check our Facebook page if the national 'roadmap' changes between making your booking / enquiry and attending an event.

Think Like A Tree

Taster sessions

Rosliston Forestry Centre

06 Feb: 10:30-12:30

06 March: 10:30-12:30

(1hr TLAT& 1hour Forest Bathing)

03 April: 10am-12:30

Nature inspires us to be more resilient, to cope with change, accept challenges and to grow.

How to start designing and planning to reach your goals with a little help from nature. Benefit yourself, others and the environment.

Booking essential . Suitable for adults and children over 7. Adult £10 Child £5

Tues 12 & 19 April

Birds

2-3:30pm

Let the EEP team introduce you to bird spotting. Learn some key tips for identifying birds, make a bird feeder using recycled materials then visit the on site hide to observe some of our feathered residents.

Suitable for all ages.

Booking essential £2.50 per person



Volunteer at Rosliston Forestry Centre

Improve your physical and mental health, enjoy healthy outdoor exercise and make new friends.

PLEASE EMAIL US BEFORE ATTENDING YOUR FIRST SESSION

rosliston@southderbyshire.gov.uk

Drop In Gardening D.I.G

Every Monday afternoon 2-4pm

Help us maintain the sensory, herb and wildlife gardens, improve your fitness levels and learn some basic gardening skills at the same time.

All sessions are free and we are grateful for your help.

No sessions on bank holidays or in snow

Covid 19 Safety please bring your own gloves & drinks and follow Govt guidelines as they are updated

Activity supported by



Rosliston Rangers

Every second & fourth Tuesday of the month

10:00am-3pm

Make a regular date or drop in as you please to help with site maintenance projects, tree work, conservation and wildlife surveys.

Training provided.

Covid 19 Safety please bring your lunch, drinks & gloves



We're pleased to announce that we are a Visit England 'We're Good to Go' Covid-19 risk-assessed site. We are open to discussions about what



The Environmental Education Project has been delivering quality outdoor sessions at Rosliston and other locations since 1994.

We aim to:

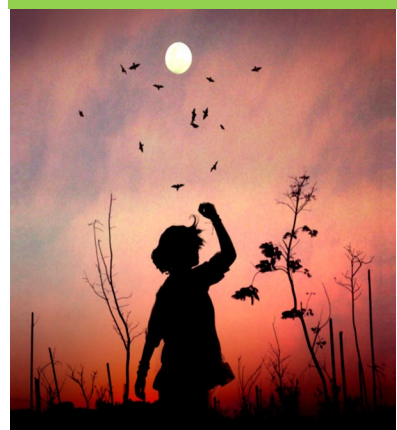
- promote respect for the environment
- provide a fun learning experience at all our sessions
- provide sessions which can be adapted to suit your learners.
- Offer environmental & heritage sessions at Rosliston Forestry Centre, in Swadlincote or at your school

We have won a National Green Apple Environmental Award for Education and Training, and have developed and delivered activities around the country for the Woodland Trust.

Our current 'offer' and prices:

- Visits to Rosliston Forestry Centre with bespoke H&S arrangements @£100 per class for 2hrs / £190 for a day of 4 hrs teaching time and use of our (very well ventilated!) outdoor classroom. Max 30
- Early Yrs @£75 per 1.5hrs Maximum capacity 30 pupils (smaller groups advised)
- Free telephone or email advice to support your learning in the school grounds.
- Outreach in your school grounds @ £55/hr per leader, minimum 2 hrs - supporting you in taking the curriculum outdoors; can include Forest School. Available now.

www.southderbyshire.gov.uk/rosliston-school-bookings



Alongside all our regular favourite science, nature, geography sessions our new 'Nature Inspired' Wellbeing sessions are ideal for improving physical and mental health! The wellbeing sessions can be stand alone sessions or elements incorporated into our standard activities.

They encourage bonding within the group and environmental responsibility.

Sessions include elements from Forest Bathing (Shinrin-Yoku) and Think Like a Tree including resilience and decision making activities.

Staff sessions also available.



We are a recognised Site, Outreach and Forest School outdoor learning provider and hold the Learning Outside the Classroom Quality Badge.

Online booking now available:

www.southderbyshire.gov.uk/rosliston-school-bookings



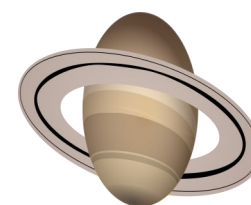
Find us at www.roslistonastronomy.org.U.K.

Have you ever looked up at the Night Sky and wondered what the Moon, a galaxy, the rings of Saturn, or distant star clusters would look like through a telescope ?

Then why not come and join us !

**You can find us at Rosliston's 'Nightworld' and 'Science Fest' events
or**

**You can come to one of our Meetings.
Non-Members are always welcome !**



**We hold two General Meetings a Month - a Mid Month Meeting
and an End of Month Meeting.
Friday evenings - starting at 7.30 pm**

We are a Charity - and we also offer
**'Outreach' events for the various adult Community Groups,
Scouts, Cub Scouts, and Beaver Groups, and Schools,
or for the public, to celebrate a specific astronomical event**

**Or Perhaps you would like to book a private 'Stargazing
Experience' as a Gift, or for yourself and your family**

Details of Meetings can be found on our Website -
www.roslistonastronomy.org.uk

For opportunities for Outreach, and private bookings - just
get in touch !

Contact us on info@roslistonastronomy.org.uk

Who are we ?

We are your local Amateur
Astronomy society.

We have been meeting at Rosliston
Forestry Centre since 1999.



Sun 1st May

Dawn Chorus Walk

04:30am-06:00am

Join Birding for Beginners leaders on a guided walk to hear the glorious dawn chorus and identify which birds are singing.

FREE OF CHARGE

No booking required

Email: birdingfor@gmail.com for info

Donations to support the volunteers feeding the birds at Rosliston gratefully received.

Sat 7 May

Science Day

11am-3pm

Join the EEP Team to discover the wonderful world of nature & science. Exhibits and experiments to try. Guided Fungi walks, Natural dyes, Rosliston Astronomy group ASTRO talk & display and much more.

Some activities may be chargeable

No booking required

Sat 14 -Thurs 26 May

Walking Festival

Lots of opportunities for guided and self led walks, trails and activities in the National Forest.

Check social media for opportunities and events near you.

Tues 31 May

Jubilee

2-4pm

Join the EEP Team in celebrating the Queen's Platinum Jubilee with crafts and games with a royal theme.

No booking needed

Meet in the Forest Classroom at 2pm

£2.50 per person

Tues 26th July

Plastic Fantastic

2-3:30pm

Reduce, Reuse, Recycle!

Come and find out some great ideas for reducing single plastic use and make useful items to take home.

£2.50 per person

No booking required

Fri 29 July

Nightwatch

7pm-11:30pm

Find out more about nocturnal creatures and the night sky with our experts from our local groups. Walks, talks and displays throughout the evening about bats, badgers, moths and more...

Booking essential

£3:00 per person

Tues 2nd & Thurs 4th August

Dens, Campfires and S'more

2-4pm

Fantastic fun building dens in the woods, learn how to safely and sustainably light a campfire then cook the delicious campfire treat of smores.

All materials and equipment provided. Please advise of food allergy and dietary requirements at time of booking.

Booking essential

£5.00 per child taking part

Tues 9 August

Minibeast Safari

2-3.30pm

Join us for a guided walk to discover some of the smallest creatures at Rosliston. We will be looking for and identifying minibeasts at different places around the site.

No booking needed

Meet in the Forest Classroom at 2pm

£2.50 per person

Tues 23 August

Wildlife Watch

Pond dipping

2-4pm

Join us on site to see what creatures lurk beneath the waters of the lake. All equipment provided.

No booking needed

Meet us at the Lake

£2.50 per person

Tues 30 Aug

Grabbit for your Rabbit

2pm- 4pm

Rake and collect hay for your furry friend while learning about meadow plants, management and biodiversity

FREE OF CHARGE

No booking required; please bring your own bag

Meet us in the Meadow

Weds Sept 14

Bat Walk

6.30pm-9.30pm approx. finish time

An opportunity to find out all about bats, what they eat, where they live and how they find their way in the dark. Introductory talk followed by walk using bat detectors.

Led by Derbyshire Bat group

£3 per person

Booking essential

Thurs 22 Sept

Foraging Walk

10am-12pm

A guided walk around the Forestry Centre learning about nature's plentiful bounty. What is good to eat, use and what is best avoided. Foraged material, recipes and ideas to take away.

£10 per person

Booking essential

Suitable for older young people & adults

Sat 15 October

Science Day

11am-3pm

Join the EEP Team to discover the wonderful world of science. Exhibits and experiments to try. ASTROS talk & display and much more.

Some activities may be chargeable

No booking needed

22-30 October

Halloween Trail

Available from reception daily 10am-3pm

Explore the trail using clues and activities to learn about wildlife, myths and legends and look out for a spooky surprise or two!

£2.00 per trail

Tues 25 October

Shelters & Tree guardians

2-4pm

Join the EEP Team to make a sustainable shelter in the woods and protect it with handmade tree guardians

£3 per person

No booking needed

Meet us in the outdoor classroom at 2pm

Sat 26 November

Christmas Wreath Workshop

10am-12noon

Make a traditional wreath and seasonal tree decoration using natural materials guided by members of the EEP Team.

£15.00 per person

Booking essential

Suitable for older young people & adults

**For booking please contact:
rosliston@southdebyshire.gov.uk**