

Corporate Plan performance Q2 2023/24

Our environment

Key: Above/on target Below target Proxy measure - not targeted or outturn reported annually At risk of failing target



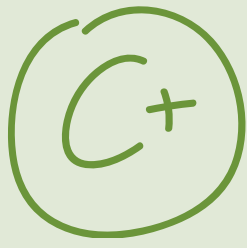
229kgs of household waste collected per head of population



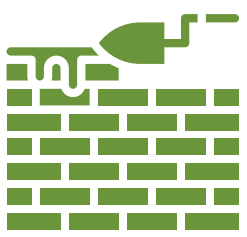
50% of collected waste recycled and composted



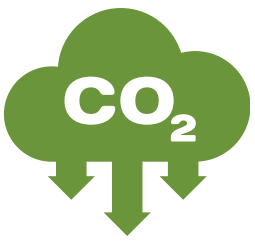
246 fly-tipping incidents recorded



97.4% of inspected streets meet grade B or above



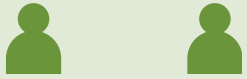
Minimise the impact of building developments on biodiversity- unable to measure until Autumn 2024



22/23 - 2,074 tonnes (16.8% reduction against baseline)



93% of new homes meet water efficiency targets



66% of residents recommend Swadlincote Town Centre as a place to visit



Four parks awarded Green Flag status.



Proportion of good quality housing development schemes - out turn not available



Corporate Plan performance Q2 2023/24

Our people

Key: Above/on target Below target Proxy measure - not targeted or outturn reported annually At risk of failing target



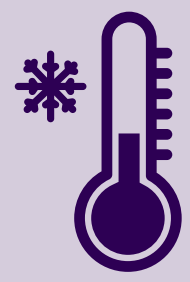
135 community groups supported



9% reduction in ASB reports compared to the same period 2018-19.



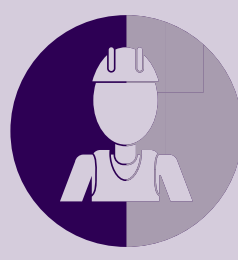
106 households prevented from homelessness



162 interventions undertaken to prevent fuel poverty



Health and Wellbeing Action plan 2023-24 adopted



49.41% of planned housing maintenance delivered



14 condition surveys carried out on Public Buildings



Average 176 days to re-let council homes



Delivered the objectives in the Supporting Aspirations Plan



14,400 customers interact digitally as first choice



43,557 calls answered by Customer Services



24,054 customers supported via face to face contact



58,708 social media fans engaged digitally



Employee Staff Survey to be launched in November.



10 apprenticeships



4.17 days lost to sickness



75% of mandatory Health and Safety training delivered



Corporate Plan performance Q2 2023/24

Our future

Key: Above/on target Below target Proxy measure - not targeted or outturn reported annually At risk of failing target



Employee jobs in South Derbyshire increased from 31,000 to 34,000



28,174 sqm of new commercial floor space as of 2022-23. Reported annually in Q4.



Total rateable value of businesses in the District - £75,458,747



76% of planning conditions discharged in 8-13 weeks



80% of planning applications determined within statutory period



90% of new facilities and contributions secured through Section 106



Transformation Action plan on target



The Operational Services Commercialisation Plan was submitted and approved at EDS Committee in September 2023

