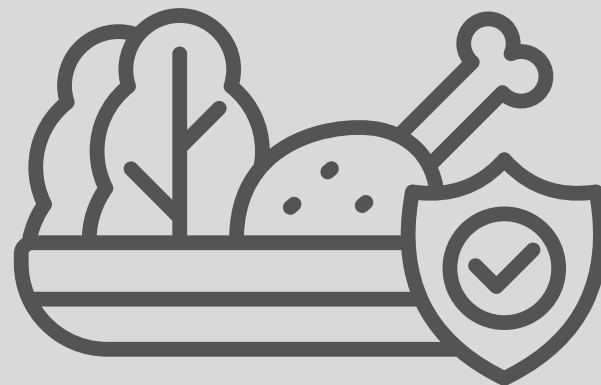




143 local businesses supported.



90.7% of local food businesses meet highest hygiene standards.



Improving employment opportunities for local people. The project commenced in October, 8 residents supported in Q2.



Engaging young people in employability, skills and wellbeing programmes to support social mobility. Programme begins Q3.



On track to achieving the annual target of >12,269 sqm net growth for commercial floor space. Permission has been granted for 54,857 sqm employment floorspace East of Dove Valley Business Park.



Contract signed with Masterplan Team. Draft plan for consultation prepared and early stakeholder engagement undertaken.



ON TRACK



NOT ON TRACK



REPORTED ANNUALLY

# Council Plan 2025-26 | SHAPE OUR ENVIRONMENT

365



The out turn for 2024/25 was 1,129 tonnes of carbon dioxide, which achieved the annual target. The Annual Action Plan for 2025/26 has been approved by EDS Committee.



Low carbon policies built into Local Plan. Consultation responses being evaluated



The Fleet Replacement Plan is on track with 49 low carbon vehicles ordered and 4 delivered. Remaining vehicles to be delivered in Q3 and Q4. Spec for year 3 vehicles in draft & procurement to start shortly.



Supported 14 local businesses with decarbonisation.



197kg of Waste Collected per head of population.



47% of household waste recycled and composted.



99% Trade Waste collected.



Roll-out plan in progress, to begin weekly Food Waste collections from 1 April 2026.



Progress made towards increasing the land owned by SDDC in conservation, with more trial sites added.



Local Plan includes policies to increase biodiversity and support a net zero South Derbyshire. Consultation on Local Plan being evaluated.



Work on initial designs for the Leisure and Office Project commenced.



Parcels of land for redevelopment and regeneration identified, report to be taken to HCS Committee in January 2026.



ON TRACK



NOT ON TRACK

365

REPORTED ANNUALLY

Q2 - 2025-2026



59% planning applications determined within timescales, against 75% target.



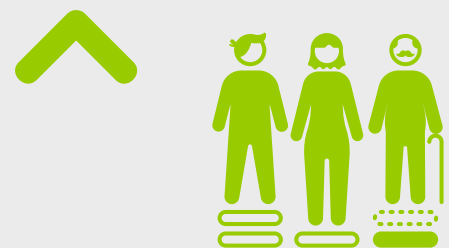
Digital waste management system active in Waste Services. On track for Q3 rollout in street cleansing and grounds maintenance.



Local Plan consultation results under review and evidence gathering in progress.



Plans for residents survey to be presented to Leadership Team and Members in Q3.



EDI Strategy 2025-2028 and action plan in progress. Neurodiversity training for Managers completed.



Customer & Digital Improvement Plan - all live projects reviewed and on track.



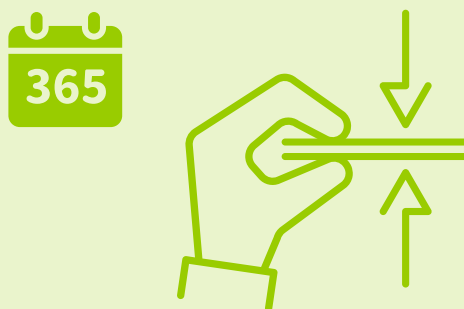
17,862 customers are interacting with us digitally as a first choice.



Self assessment completed with Customer Service Excellence, document upload and evidence gathering continues.



On track with actions outlined in Communications and Engagement Strategy & Action Plan



Update on budget gaps to be provided in Q4.



Update on balanced budget to be provided in Q4.



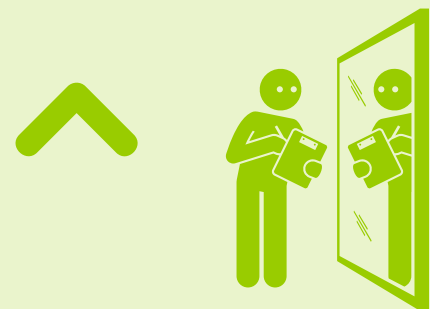
ON TRACK



NOT ON TRACK



REPORTED ANNUALLY



Self Assessment against Best Value Standards and Intervention Statutory Guidance - no update.



Actions under Phase 2 of People Strategy Delivery Plan continue to progress well.



Employee survey feedback shared with Trade Unions and colleagues. Service specific feedback to follow in Q3



Leadership Team and Elected Members continued work with East Midlands collaborative working groups in Q2.



The overall tenant satisfaction score for 2024/25 was 69.8%. Surveys for 2025/26 will be carried out in Nov/Dec.



Repairs policy and new Damp and Mould policy approved. Update on housing service reported to committee.



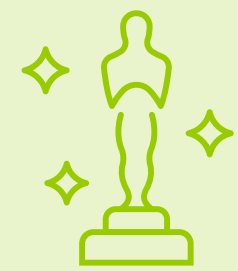
Reduce average time to re-let Council homes when standard work required - 48.64 days against 55 days target



Reduce average time to re-let Council homes when major work required - 107.2 days achieved, against 90 day target.



All stock condition data reviewed and validated. Five year Asset Management Plan to be reviewed in Q4.



8 industry awards achieved in Q2, taking the total to 10.



ON TRACK



NOT ON TRACK



REPORTED ANNUALLY





Health provision is primary consideration in any new housing development consent.



We are meeting housing needs for District in Local Plan review.



Council signposting to Wellbeing Hubs, being used for benefit of communities..



Draft Active Wellbeing Strategy and action plan to be presented to Overview and Scrutiny Committee in Q3.



661 ASB incidents and 383 fly tipping reports made to Police and Council in South Derbyshire (YTD).



Five events and arts activities held across the District in Q2.



33 interventions to prevent serious housing hazards and fuel poverty.



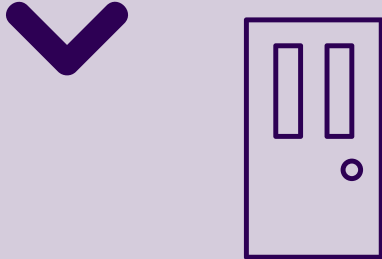
22 Vulnerable Adult Risk Management (MARM) interventions.



Multi-agency welfare group to support vulnerable residents. No targets, monitor only.



36 affordable homes across the District delivered in Q2.



Bringing long-term empty homes back into use. On track with new permanent officer starting in Q3.



ON TRACK



NOT ON TRACK



REPORTED ANNUALLY