

# SOUTH DERBYSHIRE COMMUNITY SAFETY PARTNERSHIP

## PARTNERSHIP PLAN 2026 - 2029



# FOREWORD BY THE CHAIR

The South Derbyshire Community Safety Partnership (CSP) Plan for 2026–2029 sets out our shared priorities for keeping our communities safe over the next three years. The plan aims to reduce and prevent crime and disorder, tackle anti-social behaviour and reduce fear of crime in South Derbyshire.

Our priorities are shaped by a combination of local data, professional insight and the views of residents. This evidence-led approach ensures that our work focuses on the issues that matter most to the people of South Derbyshire.

The plan outlines how the CSP has performed over the past year and explains how community safety work is organised both locally and across Derbyshire. It also highlights the wider challenges and opportunities we face in an environment where crime patterns and risk areas continue to evolve. We do this in the backdrop of an increasing population in South Derbyshire, the fastest growing district countywide and one of the fastest growing in the Country. Reducing crime and disorder year on year is becoming increasingly difficult, making collaboration and innovation more important than ever.

Community Safety Partnerships were established under the Crime & Disorder Act 1998, requiring every district and borough council to work with partners to address local crime and disorder.

In South Derbyshire, our CSP brings together statutory partners including:

- South Derbyshire District Council (SDDC)
- Derbyshire County Council (DCC)
- Youth Justice Service (YJS)
- Derbyshire Constabulary
- Probation Services
- Derbyshire Fire and Rescue Service (DFRS)
- Integrated Commissioning Board (ICB)

We also work closely with the Police and Crime Commissioner, South Derbyshire CVS, and a range of voluntary and community organisations.

By combining the strengths, expertise and resources of all partners, we can develop effective, intelligence-led responses that minimise the impact of crime and support safer, more resilient communities. All partners remain fully committed to this shared vision.



*Councillor Neil Tilley*



# STATUTORY RESPONSIBILITIES

## The Domestic Abuse Act

For local authorities, police and charities, domestic abuse is a problem that staff deal with daily. The Domestic Abuse (DA) Act 2021, updated in 2024, gave police, local authorities, and the courts wider powers and greater accountability concerning protecting domestic abuse victims.

The Act provides a statutory definition of DA has emphasising that DA is not just physical violence, but can also be emotional, controlling or coercive, and economic abuse.

The Act also strengthened the local authority duties to give priority to victims of DA in need of rehousing and granted extended powers to the police and the courts to tackle domestic abuse.

## Domestic Homicide Reviews

The requirement for CSP's to conduct DHR's came into effect in 2011. A DHR is a review of the circumstances in which the death of a person aged 16 or over has, or appears to have, resulted from violence, abuse or neglect by: -

- (a) a person to whom he/ she was related or with whom he/ she was or had been in an intimate personal relationship, or;
- (b) a member of the same household as him/ her,

They are held with a view to identifying the lessons to be learnt from the death.

In Derbyshire, the County Council lead on the co-ordination of DHR's. However there is reliance on local agencies to share information and participate as and when required.



# STATUTORY RESPONSIBILITIES



## Serious Violence Duty

The Serious Violence Duty was introduced as part of the Police, Crime, Sentencing and Courts Act (PCSC Act) 2022, alongside Serious Violence Reduction Orders (SVRO's), and forms a key part of the Government's wider programme of work to prevent and reduce serious violence.

Alongside the duty, the PCSC Act amends The Crime and Disorder Act 1998 to ensure that tackling serious violence is an explicit priority for CSP's.

By taking a multi-agency approach to understand the causes and consequences of serious violence, focusing on prevention and early intervention, partners are required to work together to plan, share data and information, to generate evidence-based analysis of the problem and solutions and publish a strategy to prevent and reduce serious violence in local areas.

## Modern Slavery

The term 'Modern Slavery' captures a whole range of types of exploitation, including but not limited to:

- **Sexual exploitation**
- **Domestic servitude**
- **Forced labour**
- **Criminal exploitation**

Section 52 (A duty to notify) of the Modern Slavery Act 2015 requires that where specified public authorities have reasonable grounds to believe that a person may be a victim of slavery or human trafficking, it must notify the Home Office.

## Prevent Duty

Section 26 of the Counter-Terrorism and Security Act 2015 places a duty on certain bodies ("specified authorities") to have "due regard to the need to prevent people from being drawn into terrorism". Specified authorities include Local Government, Criminal justice, Education, Childcare etc., Health and social care and the Police.

# DERBYSHIRE PARTNERSHIP STRUCTURE

## Police and Crime Commissioner

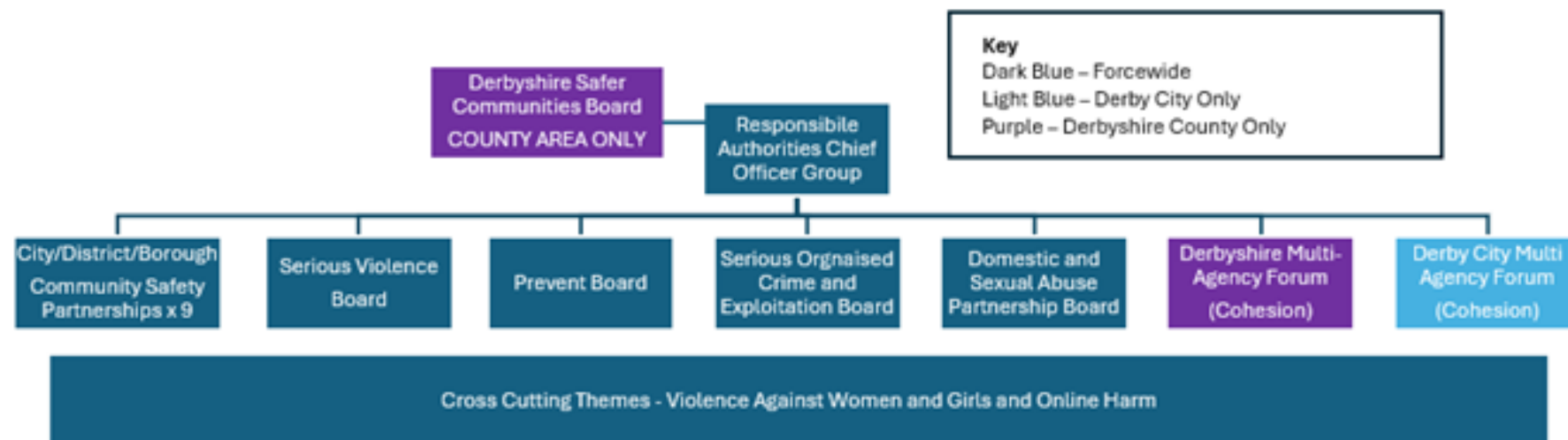
Police and Crime Commissioners (PCC's) were created by The Police Reform and Social Responsibility Act 2011 and replaced Police Authorities. The Act and supporting legislation, outlines the roles and responsibilities of the PCC as well as the Chief Constable.

In November 2024 Nicolle Ndiweni-Roberts , PCC for Derbyshire set her Police and Crime Plan (2024-2029) to protect the people of Derby and Derbyshire. It puts the law-abiding citizen and victims of crime at the heart of everything they do. Her priorities are:

## PCC Strategic Priorities

- Serious Violence including Violence Against Women and Girls (VAWG).
- Anti-Social Behaviour (ASB) and Community Safety .
- Neighbourhood Policing
- Bringing Offenders to Justice..
- Drug Dealing and Substance Misuse
- Supporting Victims and Safeguarding

The plan will be reviewed annually taking account of changing priorities to ensure it remains relevant.



## Theme Boards

Derbyshire has mature partnership arrangements in place and partners are committed to addressing community safety issues.

Within Derbyshire there are eight District based CSPs and one in Derby City. At a County level the Derbyshire Safer Communities Board (SCB) provides strategic leadership and direction. The Chairs of each CSP sit on the Board along with senior representatives from each of the responsible authorities and other key stakeholders.

These partnerships are required to undertake an annual assessment and formulate a Community Safety Agreement at a County level to address crime and disorder, substance misuse, anti-social behaviour and re-offending.

In order to ensure a strategic overview of all Community Safety statutory duties and priorities, a new structure of Community Safety Board meetings has been developed across Derbyshire. These meetings will ensure a robust response is given to any new policy, legislation or statutory guidance and will discuss and agree necessary resource to deliver workstreams in priority areas.



# CRIME TRENDS

The CSP receives monthly crime data from a Partnership Analyst, this shows a breakdown of crime figures for each crime type broken down to local areas. This data helps Partnership officers monitor where increases and decreases in crime have occurred, in what areas of the District they are occurring and put into place resources and measures to reduce any increases.

Over the last 12 months (Jan–Dec 2025) the biggest increases in crimes reported in South Derbyshire are Business Burglary (77%), Drug trafficking (29%), Theft of Motor Vehicle (15%) and Stalking and Harassment (11%)

It is worth noting **Business Burglary rates** were very low the two years prior to 2025 so the increase is returning to the levels it was at for the years prior, the table to the right shows that despite the rise, South Derbyshire has the lowest rate of Business Burglary in the County Compared to other areas .

**Drug trafficking** has increased mainly due to community intelligence and proactive policing and **stalking and harassment** figures have gone up across Derbyshire and nationally due to the following reasons:

- Changes in police recording practices (major factor)
- Better officer training and increased awareness
- More victims reporting incidents
- More digital/online stalking behaviours being recognised and recorded

**Vehicle Crime** is a longstanding issue in South Derbyshire due its close proximity to a number of major link roads; A50, A38 and M1, this makes it easy for criminals to travel a short distance off a major link road, commit crimes and get back on the link road in quick time. Automatic Number Plate Recognition (ANPR) cameras play a key role in the police’s capability to combat vehicle crime and they have recently purchased a second ANPR vehicle to help track criminals coming into the District.

Business Burglary Jan 2025 to Dec 2025	Volume	Rate <sup>1</sup>
Chesterfield	170	1.60
Bolsover	127	1.52
Derby City	279	1.02
Derbyshire Dales	64	0.89
Erewash	91	0.80
North East Derbyshire	82	0.77
High Peak	62	0.67
Amber Valley	85	0.65
<b>South Derbyshire</b>	<b>62</b>	<b>0.58</b>
County Council area	743	0.90
Force area	1,022	0.93

Although Business Burglary has increased in the district it still remains the lowest per 1,000 population across the county.

Theft of Motor Vehicle Jan 2025 to Dec 2025	Volume	Rate <sup>1</sup>
Bolsover	176	2.10
<b>South Derbyshire</b>	<b>194</b>	<b>1.82</b>
Derby City	460	1.68
High Peak	143	1.56
Erewash	177	1.55
Chesterfield	148	1.40
Amber Valley	143	1.10
North East Derbyshire	117	1.10
Derbyshire Dales	61	0.85
County Council area	1,159	1.41
Force area	1,619	1.48

South Derbyshire benefits from its attractive position as a great place to commute from. However this also means that our close proximity to major road networks make us vulnerable to criminals targeting the area for high value vehicles just south of the A50, which is reflected in our Theft of Motor Vehicle statistics.

# CRIME FIGURES

Total Crime Jan 2025 to Dec 2025	Volume	Rate <sup>1</sup>
Derby City	30,526	111.35
Chesterfield	10,629	100.23
Erewash	8,326	72.87
Bolsover	5,678	67.78
Amber Valley	8,833	67.71
<b>South Derbyshire</b>	<b>6,267</b>	<b>58.76</b>
High Peak	5,363	58.32
North East Derbyshire	5,669	53.16
Derbyshire Dales	3,330	46.41
County Council area	53,658	65.25
Force area	84,621	77.17

## Total Crime

Total crime figures remain comparatively low in South Derbyshire compared to other local authority areas across the county. During 2025 South Derbyshire saw a reduction in Total Crime of 2.8% on the previous year which equates to 181 less crimes.

District	Type	Jan 2024 to Dec 2024	Jan 2025 to Dec 2025	Volume Change	% Change
Amber Valley	Total crimes	8,866	8,833	-33	-0.4%
Bolsover	Total crimes	6,014	5,678	-336	-5.6%
Chesterfield	Total crimes	10,578	10,629	51	0.5%
County Council area	Total crimes	54,859	54,095	-764	-1.4%
Derby	Total crimes	29,891	30,526	635	2.1%
Derbyshire Dales	Total crimes	3,241	3,330	89	2.7%
Erewash	Total crimes	8,691	8,326	-365	-4.2%
Force area	Total crimes	84,750	84,621	-129	-0.2%
High Peak	Total crimes	5,561	5,363	-198	-3.6%
North East Derbyshire	Total crimes	5,460	5,669	209	3.8%
South Derbyshire	Total crimes	6,448	6,267	-181	-2.8%

## Anti Social Behaviour

Anti Social Behaviour Jan 2025 to Dec 2025	Volume	Rate <sup>1</sup>
Chesterfield	2,221	20.94
Derby City	4,993	18.21
Erewash	1,573	13.77
Bolsover	1,143	13.64
High Peak	1,238	13.46
Amber Valley	1,727	13.24
North East Derbyshire	1,242	11.65
<b>South Derbyshire</b>	<b>1,080</b>	<b>10.13</b>
Derbyshire Dales	699	9.74
County Council area	10,923	13.28
Force area	84,621	77.17

Anti-social Behaviour (ASB) remains a priority concern for residents across Derbyshire, however when comparing ASB figures with other areas of the County, South Derbyshire continues to have the second lowest recorded rate per 1,000 population. Within South Derbyshire, the ASB Hotspot for the District is Swadlincote Town centre. South Derbyshire has the 4<sup>th</sup> lowest number of ASB incidents per 1000 population.

## Domestic abuse

During 2025, reports of Domestic Abuse (DA) in South Derbyshire decreased slightly by 2.1%; however, it remains one of the most frequently reported crime types dealt with by the police. Domestic abuse is widely recognised as being underreported, and as such the CSP must continue to raise awareness across the district and actively promote the local support services available.



# PRIORITIES 2026-2029

Following a Multi Agency Partnership Workshop held with Statutory Partners and taking into account the PCC's priorities, Strategic Assessment crime data (for 2025) and local intelligence, the SDCSP will focus on the following local priorities for the duration of this plan (2026-2029, to be reviewed annually: -



## ANTI SOCIAL BEHAVIOUR

Hotspot locations  
Early Intervention  
Enforcement Action  
Education  
Multi Agency Approach  
Prevention  
Target Hardening



## SAFEGUARDING AND PUBLIC PROTECTION

Safer Homes  
Modern Slavery  
Prevent  
Hate Crime  
CCTV  
Safeguarding Victims and Vulnerable people



## VIOLENCE

Raise Awareness  
Promote Support Services  
Education  
Violence against Women and Girls  
Knife Crime  
Domestic Abuse



## NEIGHBOURHOOD PRIORITIES

Pubwatch  
Burglary  
Vehicle Crime  
Crime Prevention  
Shop Lifting

**ENGAGEMENT AND PREVENTION WILL RUN AS A GOLDEN THREAD THROUGH EACH PRIORITY**

# PRIORITIES – WHAT WE WILL DO

**Anti Social Behaviour** We will focus on preventing and reducing anti-social behaviour by addressing the underlying causes and responding quickly to issues that affect residents' quality of life. This includes working in partnership to identify hotspots, support early intervention, and use enforcement tools where necessary. We will prioritise engagement with communities to build trust and ensure residents feel confident in reporting concerns.

**Safeguarding and Public Protection** We will work collectively to protect vulnerable children and adults from harm, abuse, and exploitation through early identification, effective information sharing, and coordinated partnership responses. A key focus will be supporting victims to feel safe in their own homes, including through our Safer Homes Scheme, which provides improved security measures to the homes of victims at risk. Safeguarding will remain a shared responsibility, with a strong emphasis on prevention, victim support, and reducing repeat harm.

**Violence** We will focus on reducing violence in all its forms by tackling both immediate risk and long-term drivers, including substance misuse, domestic abuse, and serious violence. Partnership activity will prioritise prevention, targeted interventions for those most at risk, and promoting support services for victims. We will also work to increase community confidence and safety in public spaces, especially for women and girls.

**Neighbourhood Priorities** We will respond to locally identified neighbourhood concerns to ensure partnership activity reflects the issues that matter most to our communities. This includes working closely with residents, local councillors, businesses, and partners to deliver practical and visible solutions. We will continue to support and strengthen initiatives such as our successful Pub Watch scheme, which plays a vital role in reducing crime, promoting responsible management, and improving safety within the night-time economy. We will also help the police in reducing Burglary and vehicle crime by attending crime prevention events and educating residents on protecting property





# ACTION TAKEN IN 2025

Partners continue to work together and with the community to offer a diverse range of crime reduction and educational activities alongside public engagement events.

Over the past year the following work has been completed by the South Derbyshire CSP;

## Anti-social Behaviour



- ASB Solutions meeting held every four weeks with partner agencies, targeting enforcement and support to those responsible for ASB in our community, x 89 ASB Warning Letters issued and x4 Acceptable Behaviour Contracts (ABC's)
- x12 Community Protection Notice Warnings (CPNW's), x5 Community Protection Notices (CPN's) and x2 Fixed Penalty Notices (FPN's) were issued. Town Centre PSPO breached on 8 occasions resulting in Alcohol seized, Warning letters of FPNs.
- Police and Partner Tasking meetings continue to be held on a fortnightly basis to ensure that any hot spot areas and/ or problem individuals can be discussed and information shared as appropriate to collectively address any issues raised.
- x12 Public Area Forum Meetings were held covering the whole of South Derbyshire. The meetings are split into the six Police Areas; Etwall, Repton, Melbourne, Swadlincote, Newhall and Linton enabling open dialogue with their local Police Safer Neighbourhood Team (SNT) and Council representatives regarding any issues they may have.
- Joint work was completed to tackle off road nuisance motorbikes, parking and illegal activities in the Lowes Lane area.
- School talks on ASB, its impact and the role of the Police carried out by SNT Officers.
- x12 Safer Neighbourhood grants issued to support community projects including additional CCTV and Speed watch schemes
- New CCTV cameras in Swadlincote Town Centre and Eureka Park to deter and enforce against ASB and crime and to reassure the public
- Supported the summer play schemes in urban areas, with 990 attendees at the 10 Urban sessions held in Swadlincote, Church Gresley, Newhall and Midway.

# ACTION TAKEN IN 2025



## Violence

- Ongoing promotion of domestic abuse helpline services across the district.
- National Knife Crime Campaign, Op Sceptre took place again in May and November last year highlighting knife crime and the impact it has on communities and victims. As part of the week long campaign, activity included; knife sweeps, searching parks and open spaces for discarded knives and any other potentially harmful objects, amnesty bins were provided for the safe disposal of unwanted/ illegal knives and inputs were provided by the Police in schools and youth groups.

## Safeguarding and Vulnerability

- x266 properties were secured through the CVS run Safer Homes Scheme between April and December 2025. This includes victims of Domestic Violence, Burglary and ASB.
- Supported Hate Crime Awareness week through awareness raising campaigns.
- Safe and Sound, Derbyshire's specialist child exploitation charity, continued to provide outreach support in key areas across Swadlincote, Church Gresley and Newhall on a weekly basis. The service aims to encourage youth engagement, discussing topics such as ASB, safe sex, child exploitation and more.
- Monthly multi-agency Children at Risk of Exploitation (CRE) meetings continue to be held.
- Anti drink spiking devices and kits circulated to Pubwatch meetings. 'Ask Angela' promoted and first year's membership of Scheme link paid for to enable pubs to share information about Banning Orders, person of interest and any concerns.

## Acquisitive and Rural Crime

- Joint work completed to tackle off road nuisance motorbikes, parking and illegal activities in the Lowes Lane area.
- Community vehicle crime prevention events promoting steering locks, vehicle marking and faraday bags.
- Crime prevention advice through Derbyshire Alert and Social Media. Ongoing work with Neighbourhood Watch to expand their reach across the district.
- Several Police operations ongoing that identify and disrupt offenders in organised vehicle crime and drugs supply.

# ASB CASE REVIEWS

Legislation requires that CSPs publish up to date information on at least an annual basis regarding Anti-social Behaviour Case Reviews (formerly known as the Community Trigger)

- The number of applications for ASB Case Reviews (2025-26): Two
- The number of applications for ASB Case Reviews that did not meet the threshold (2025– 26): None
- The number of ASB Case Reviews conducted (2025-26): Two
- The number of ASB Case Reviews that resulted in recommendations being made (2025-26): None

Further information on ASB Case Reviews can be found on the SDDC website:

[www.southderbyshire.gov.uk/our-services/crime-and-community-safety/anti-social-behaviour-case-review](http://www.southderbyshire.gov.uk/our-services/crime-and-community-safety/anti-social-behaviour-case-review)



# CSP MEETING STRUCTURE

The Community Safety Partnership operates through a structured and layered programme of meetings designed to provide both strategic oversight and effective operational delivery.

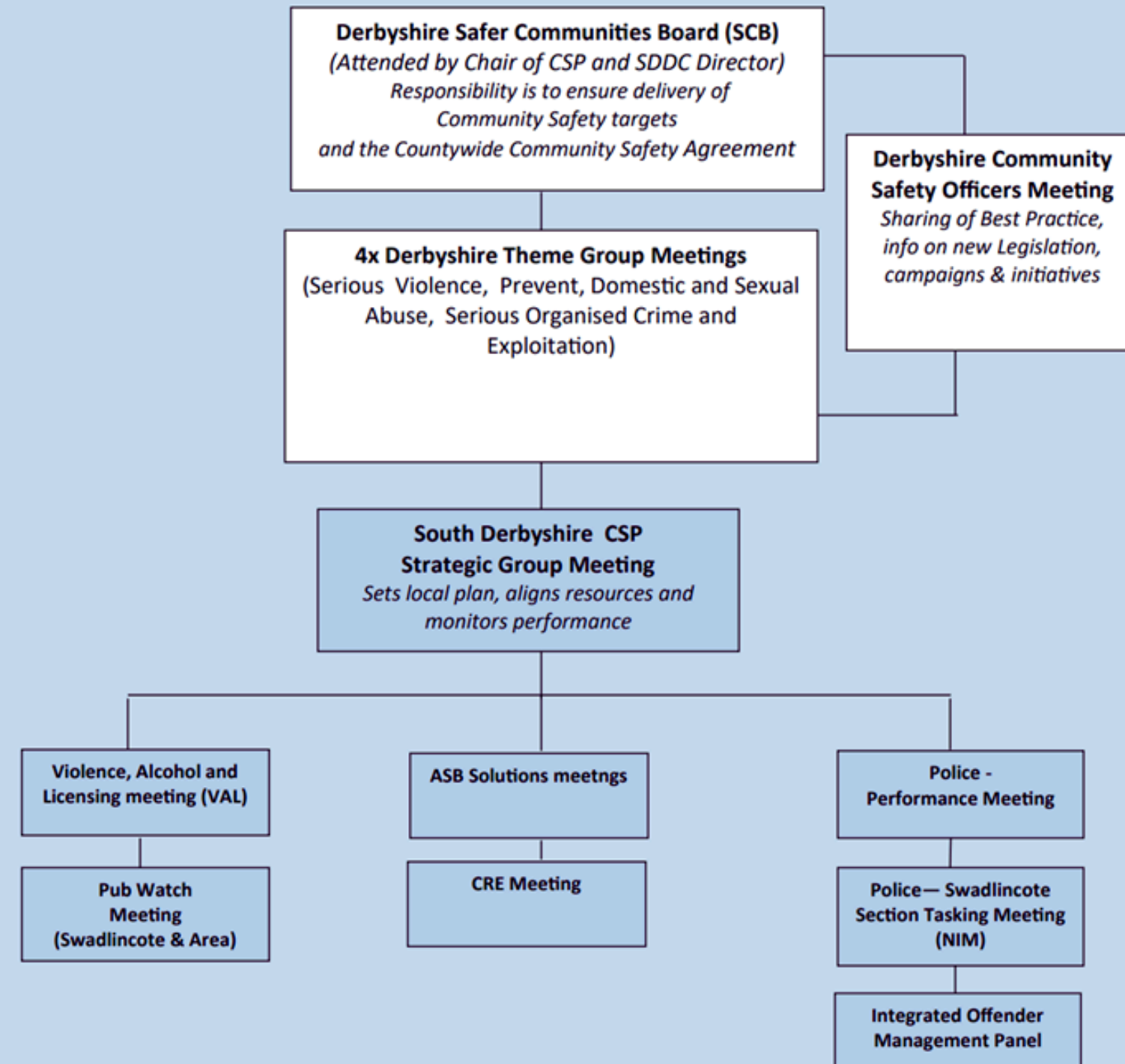
At the strategic level, the CSP Strategic Group sets the local Community Safety Plan, aligns partnership resources, and monitors performance against agreed priorities. This work is connected directly to countywide governance through the Derbyshire Safer Communities Board, attended by the CSP Chair and District Council representation, ensuring alignment with the Community Safety Agreement and county priorities.

Beneath this strategic layer sit a range of thematic and performance-focused meetings. These include Derbyshire-wide Theme Groups covering Serious Violence, Prevent, Domestic and Sexual Abuse, and Serious Organised Crime and Exploitation, alongside Serious Violence and Police Performance meetings that support cross-district coordination. Information sharing, learning, and consistency are strengthened through the Derbyshire Community Safety Officers' Meeting, which focuses on best practice, legislation, and campaigns.

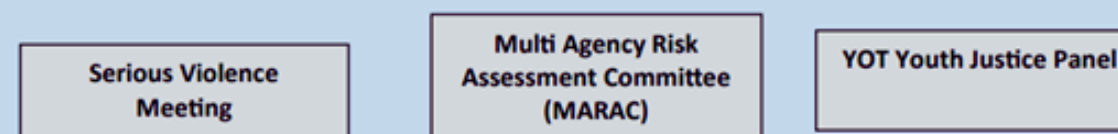
Operational delivery is driven through problem-solving forums such as MARAC, Integrated Offender Management, Youth Justice panels, ASB Solutions meetings, and CRE meetings. Local tasking and engagement are supported by Police NIM tasking meetings and Pub Watch. Together, this structure ensures a clear flow between strategy, coordination, and frontline action, enabling the partnership to respond effectively to community safety risks across South Derbyshire.



## Derbyshire & South Derbyshire CSP Meeting Structure



### South Div meetings– (Erewash, Derby City, South Derbys)




# CONTACTS AND KEY PARTNERS

## Contact us:

For further information about this Plan, or any aspect of community safety, please contact the Communities Team at South Derbyshire District Council:

**Email: [community.safety@southderbyshire.gov.uk](mailto:community.safety@southderbyshire.gov.uk)**

 Follow us on Facebook:  
@SaferSouthDerbyshire

Write to us at:

Communities Team  
South Derbyshire District Council  
Civic Offices  
Civic Way  
Swadlincote  
Derbyshire  
DE11 0AH



To get regular updates on local crime and disorder issues you can sign up to Derbyshire Alert. By registering, you can receive news and appeals, local crime information and prevention advice direct to your email address.

<https://www.derbyshirealert.co.uk>

You can also follow your local Police Safer Neighbourhood Teams on Facebook:

- [www.facebook.com/MerciaandHiltonSNT](https://www.facebook.com/MerciaandHiltonSNT)
- [www.facebook.com/MelbourneSNT](https://www.facebook.com/MelbourneSNT)
- [www.facebook.com/SwadlincoteSNT](https://www.facebook.com/SwadlincoteSNT)



[www.derbyshire.gov.uk](http://www.derbyshire.gov.uk)



[www.derbyshire-pcc.gov.uk](http://www.derbyshire-pcc.gov.uk)



[www.southderbyshire.gov.uk](http://www.southderbyshire.gov.uk)



[www.sdcvs.org.uk](http://www.sdcvs.org.uk)



[www.derbys-fire.gov.uk](http://www.derbys-fire.gov.uk)



Derbyshire Constabulary

[www.derbyshire.police.uk](http://www.derbyshire.police.uk)