

## DESIGN CONCEPTS

### THE DESIGN TEAM:

Marilyn Hallard - Design & Conservation Officer SDDC

Adam Lathbury - Urban Designer DCC

Louis Gay - Architect Race Cottam Associates

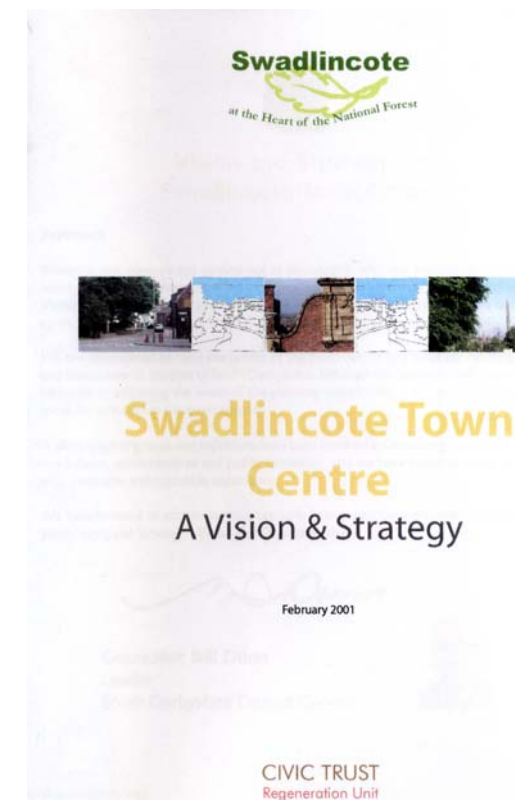
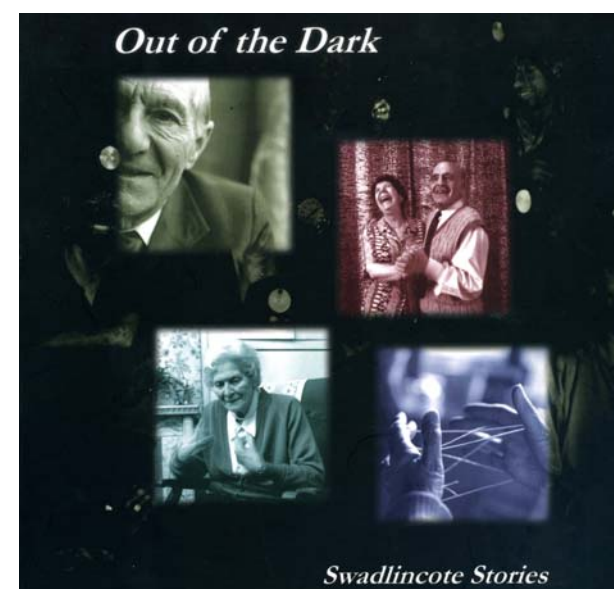
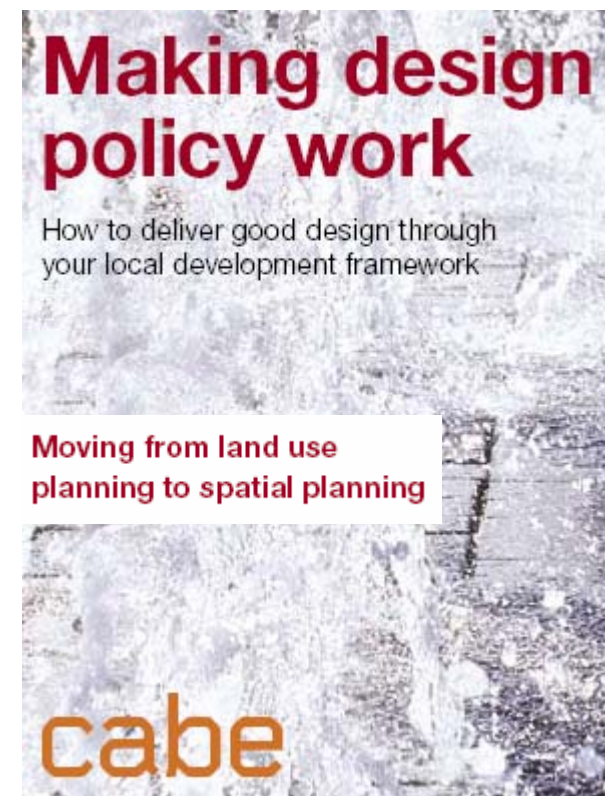
Martin Woolley - Landscape Architect

An important part of developing the Masterplan for public consultation has been exploring design concepts that address the conclusions of the Urban Form Analysis and the issues raised by Key Stakeholders.

Important issues to consider were:

- Enhancing arrival gateways and movement through the town.
- Improving legibility between town centre streets and the bus station and car parks.
- Enriching all aspects of the public realm, capitalising on the town's heritage assets.
- Reinforcing individual characteristics.

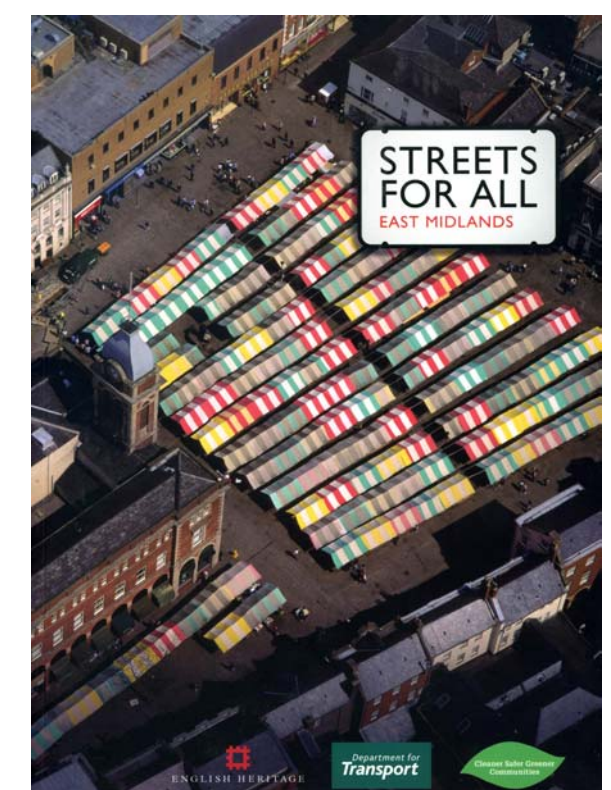
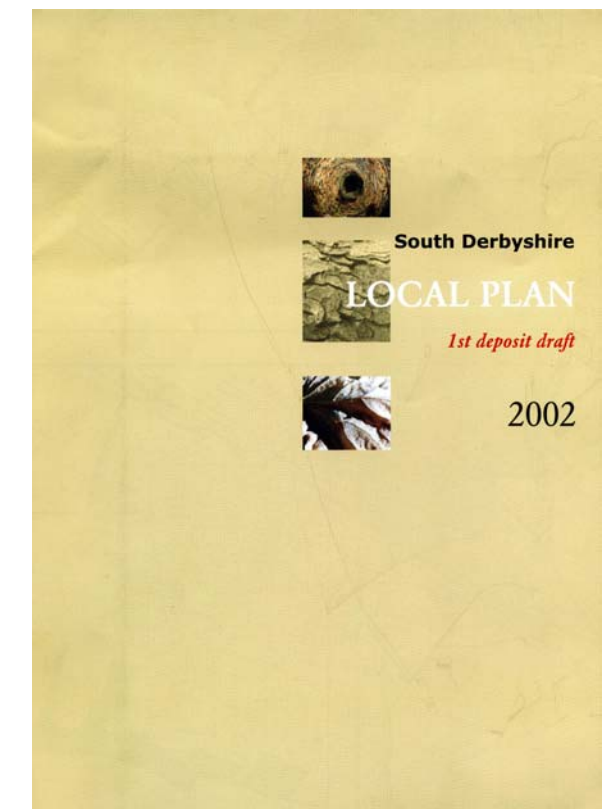
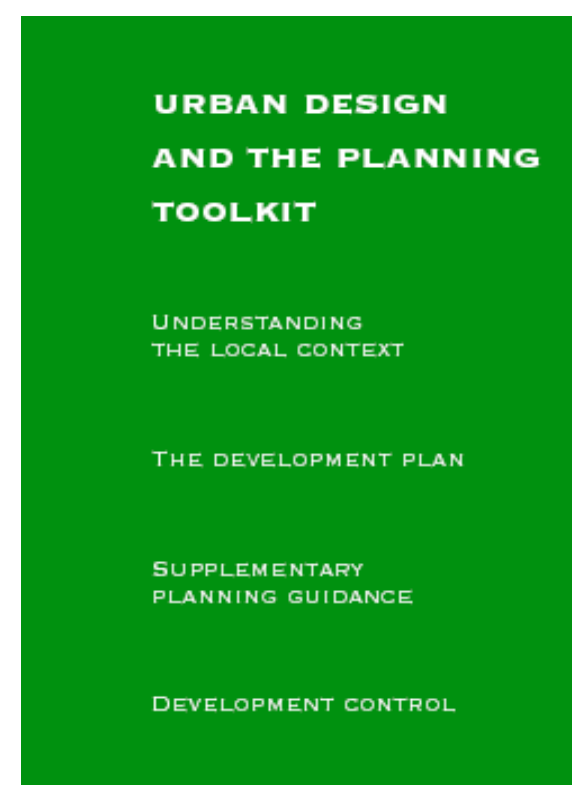
This section of the design development report shows design guidance documents considered, local sources of information about Swadlincote, and the range of ideas that have been discussed and explored.



Treat design as a cross-cutting issue which infuses all other policy areas

Ensure design policy addresses social and sustainable as well as visual and functional concerns

Base policies on an in-depth understanding of local context and the design process



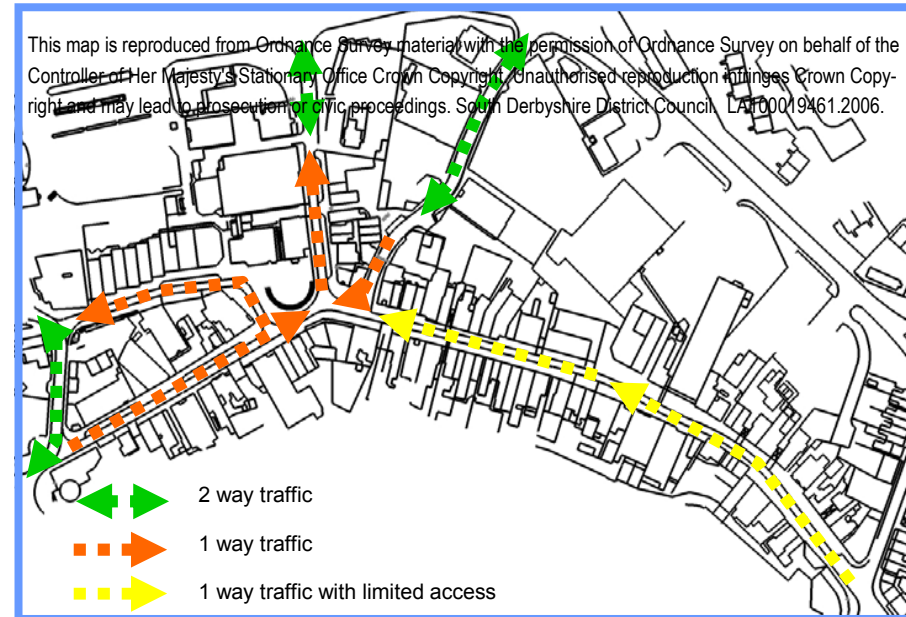
## DESIGN EXPLORATION

Initial discussion and design ideas considered the following design proposals:

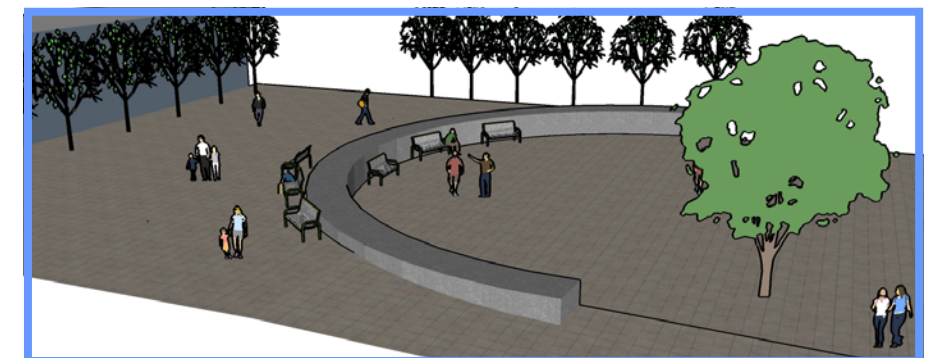
- Whether to open High Street to traffic to recreate a traditional 'high street' with footpaths and kerbs.
- Changing the direction of the existing one-way system
- Providing facilities to extend the market into a linear market down High Street
- How to reduce obstructions caused by street furniture e.g. bollards



- Providing level access to town centre shops for people with disabilities
- Changing the times that service vehicles are permitted into the town centre
- Improving the numerous jitties and alleyways that lead into the town centre



- Improving entrances to town centre on Civic Way
- Improving the car parks
- Improving the standard of lighting, street signs, and public information display
- Providing a fully pedestrianised zone in The Delph and High Street
- Using natural stone and clay paving in the heart of the town centre
- Providing modern or Victorian pastiche street furniture
- Retaining existing trees or replacing with new semi-mature street trees
- Looking at what neighbouring towns and towns further a field have done to improve their town centres

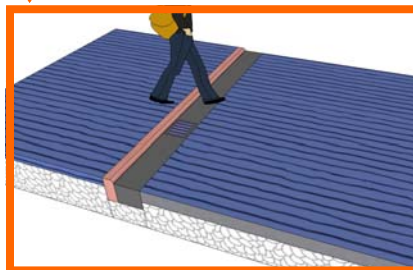


## DESIGN PRECEDENTS

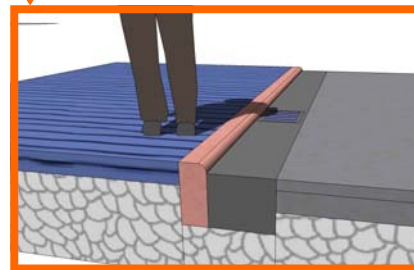
The photographs and illustrations on the following pages illustrate some good examples of townscape from towns and cities such as Newark, Birmingham, Oxford, Edinburgh, Manchester and Sheffield.

The sketches show how similar design principles could apply to Swadlincote town centre.

Blue brick paving with low rise pink granite kerb creates traditional street pattern in pedestrian zones



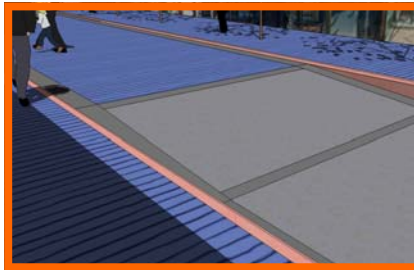
15mm high bullnose kerb provides safe access for people with disabilities



High quality natural stone footways and stone sett access roads with pink granite kerbs e.g. The Delph



Transition between pedestrian zone and traditional tarmac road using low rise and full height pink granite kerbs



▲ Footpaths and road reinstated using yorkstone split and cropped setts with low rise wide profile granite kerb and dished sett drainage channel



▲ Recent town centre refurbishment using yorkstone flag paving for footpaths, yorkstone setts for roadway, with low rise granite kerb edge and drainage channel



▲ Recent street refurbishment using yorkstone flag paving for footpaths, granite setts for roadway, with flush granite kerb edge and wide sett drainage channel with linear cast iron drain cover

Curvi-linear stone steps and pool creating focal point to a new public square



Traditional hard wearing stone laid in a modern style to provide direction to a café focal point



City centre parking bays for people with disabilities using a 15mm high wide profile stone kerb



Fantail granite setts used for time limited service access road. Modern stainless steel bollards



▲ level access pedestrian zone and service access



▲ Access to alleyways highlighted by use of contrasting natural stone



▲ Staffordshire Blue clay brick paving and stone kerbs used in town centre improvement scheme



▲ Attention to detail and expert workmanship is essential to achieve a high quality attractive finish

## DESIGN PRECEDENTS



▲ Public Open Space, Exchange Square - Manchester



▲ Stone tiered seating - Edinburgh



▲ Pedestrianised city centre street - Oxford

▼ Stone tiered seating - Edinburgh



▼ Dropped kerbing and tactile paving - Edinburgh



▼ Staffordshire Blue Clay paving - Melbourne, Derbyshire



## DESIGN PRECEDENTS



▲ City Hall steps used as informal seating - Leeds

▼ Newly pedestrianised city centre street - Leeds



▲ Entrance to city centre 'close' (Jitty) - Edinburgh

▼ Tactile paving - Newcastle upon Tyne



▲ Entrance to city centre 'close' (Jitty) - Edinburgh

▼ Granite block seating - Birmingham

